

Product Specifications



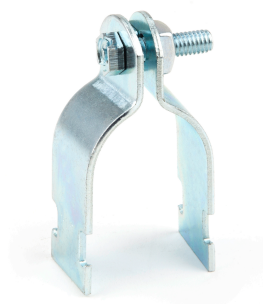
1/2" Rigid Strut Clamp

Part Number SC50R

Category Number 5391

UPC 781002817192

Rigid Strut Clamps are used to secure rigid conduit to strut channel in overhead or wall mount applications. They are electrogalvanized for superior corrosion resistance and come preassembled with a keps nut and slotted hex head bolt.



Physical Characteristics

Type	Strut Clamp
Style	Rigid
Pipe Size (in)	1/2"
Bolt Size	1/4"-20 x 3/4"
Size	1/2"
Connection	Clamp On
Material	Carbon Steel
Finish	Electrogalvanized
Gauge	16

Performance Data

Maximum Load (lb)	400 lbs
Applications	Secures Rigid Conduit to Strut Channel
Special Features	Assembled With Keps Nut For Easy Installation, Suitable For Use With 12 or 14 Gauge Metal Framing Channel
For Use With	Rigid Conduit

Packaging Details

Standard Qty	100
Master Qty	100
Price Per	100
Package Length	8.30
Package Width	5.30
Package Height	5.50
Net Weight	0.102
Package Weight	10.20

Certifications

RoHS Compliant	No
----------------	----